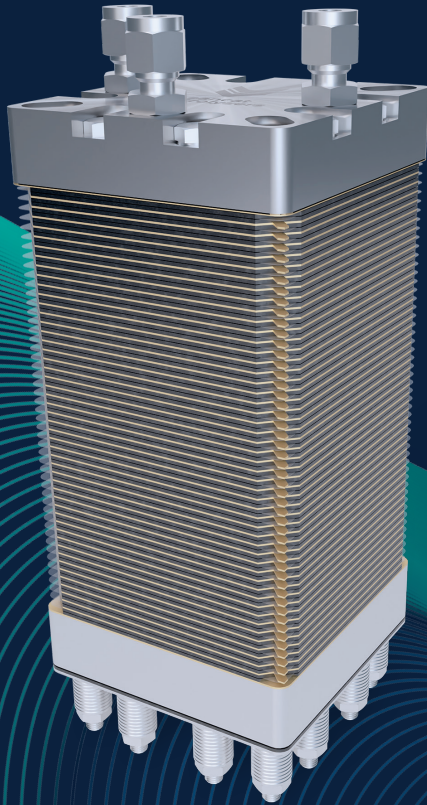


LCWE25

Water Electrolyzer Stack (PEM)



With its high power density, efficiency and reliability, LCWE-25 is perfectly suited for OEMs and integrators aiming at developing their own solution for the production of green hydrogen.

Key features

- Advanced PEM water electrolyzer stack
- Produces hydrogen at high pressure (cathode)
- Low-pressure oxygen outlet (anode)
- Designed for integration in H₂ systems
- Power range up to 5 kW

50 cells

5 kW

up to 1035 NL/h

■ Number of cells ■ Nominal load ■ H₂ production

Specifications

Power range:
0,5 – 5 kW

Max. current:
46 A

Active area:
23 cm²

Hydrogen production:
Up to 1035 NL/h (46 A)

Operating pressure H₂:
0 – 25 barg

Operating pressure O₂:
Unpressurized

Operating temperature:
30 – 75 °C

PTL anode/cathode:
Pt coated Ti felt

Bipolar plates:
Titanium

CVM connectors:
Faston 2.8 mm

Hydrogen/water connectors:
G 1/4"

Power connectors:
M6



5 cells

0,5 kW

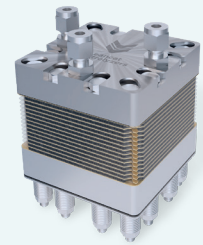
up to 103,5 NI/h



10 cells

1 kW

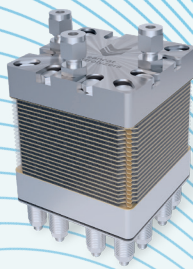
up to 207 NI/h



15 cells

1,5 kW

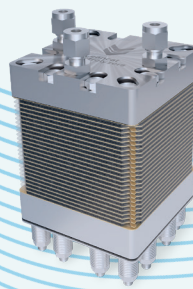
up to 310,5 NI/h



20 cells

2 kW

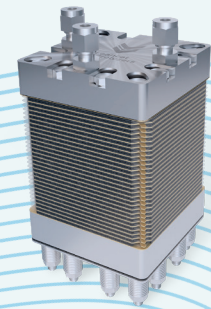
up to 414 NI/h



25 cells

2,5 kW

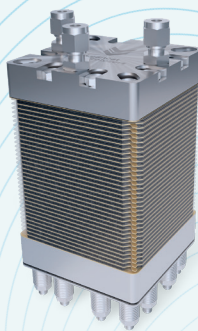
up to 517,5 NI/h



30 cells

3 kW

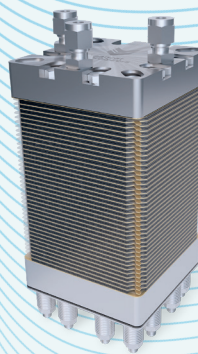
up to 621 NI/h



35 cells

3,5 kW

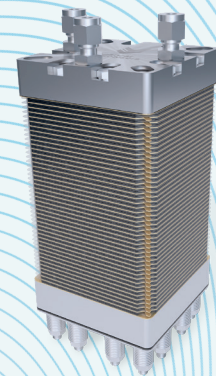
up to 724,5 NI/h



40 cells

4 kW

up to 828 NI/h



45 cells

4,5 kW

up to 931,5 NI/h

■ Number of cells ■ Nominal load ■ H₂ production



Leancat Electrolyzers s.r.o.
U Pergamenky 1145/12
Prague, 170 00, Czech Republic
info@leancatwe.com



www.leancatwe.com ● sestak@leancatwe.com